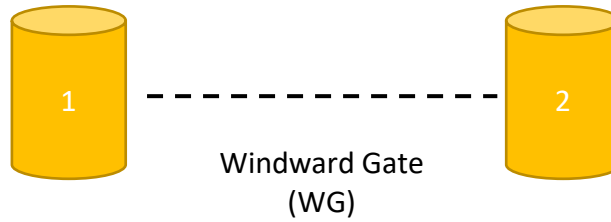
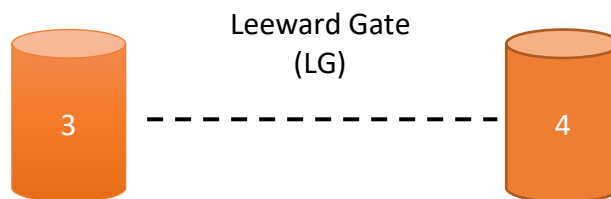
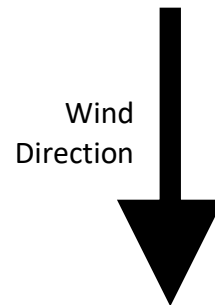


Sailing Instructions Attachment 1

2021 SA Sailing League – Courses



Minutes before starting signal	Visual Signal	Sound Signal	Meaning
-3	Class Flag, 3, 2 and 1 Displayed 	1 Sound 	Warning and Preparatory Signal. The Preparatory Signal is deemed to be Code Flag U.
-2	3 Flag Removed 	1 Sound 	Two minutes to Starting Signal
-1	2 Flag Removed 	1 Sound 	One minute to Starting Signal
Start	Class Flag and 1 Flag Removed 	1 Sound 	Starting Signal



Upwind Course	Start (LG) – WG – LG – WG – Finish (LG)
Downwind Course	Start (WG) – LG – WG – LG – Finish (WG)
Start / Finish line: Leeward Gate (LG) or Windward Gate (WG) – Signal Vessel will be located at either extension of the gate.	

Sailing Instructions Attachment 1

2021 SA Sailing League – Courses



South-West (downwind start) / North-East (upwind start) Quadrant Wind



East (upwind start) / West (downwind start) Quadrant Wind

Sailing Instructions Attachment 1

2021 SA Sailing League – Courses



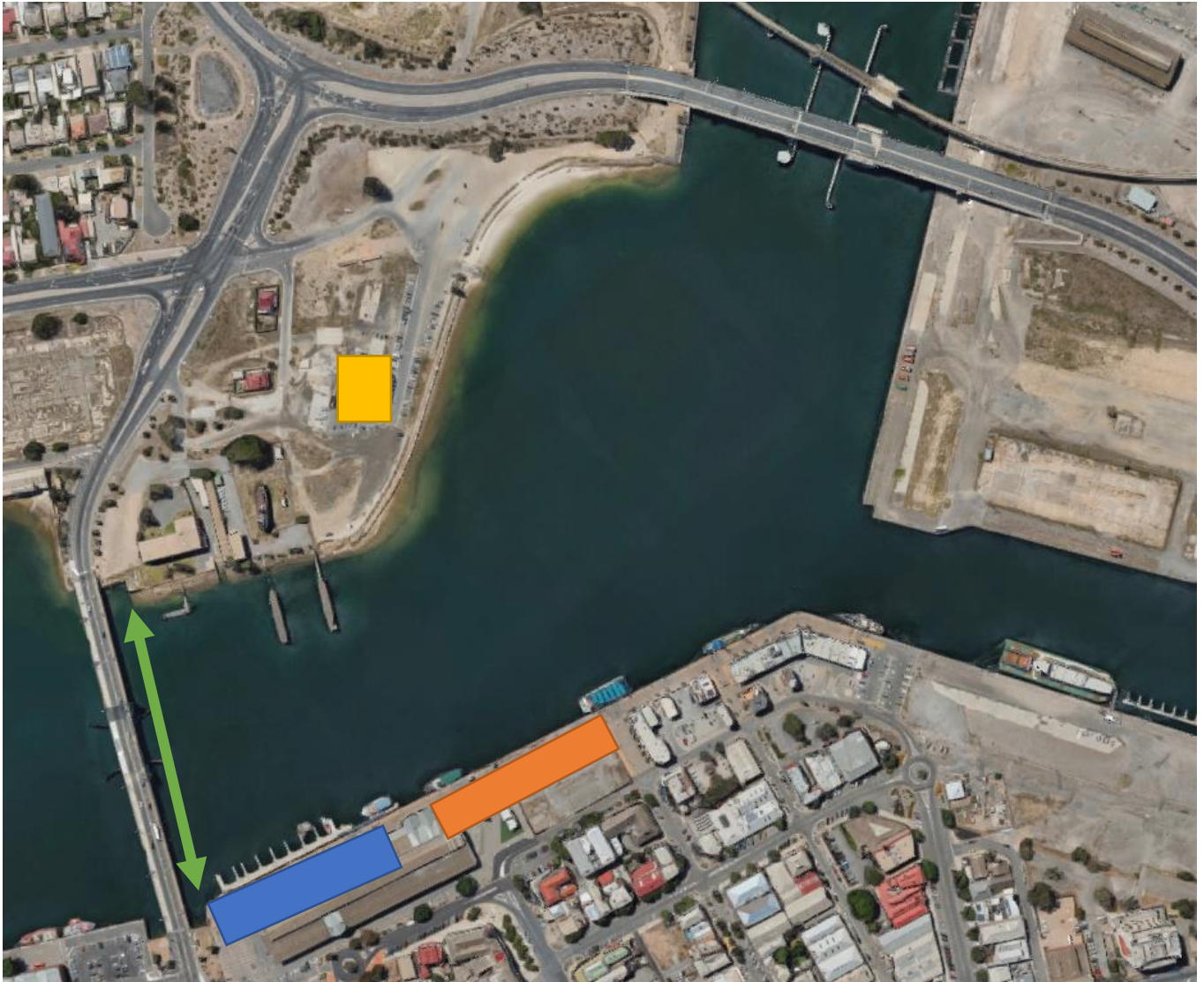
North (upwind start) / South (downwind start) Quadrant Wind



North-West (upwind start) / South-East (downwind start) Quadrant Wind

Sailing Instructions Attachment 1

2021 SA Sailing League – Courses



**BLUE – Event Location, Regatta Office, Changeover/Dock Location
(Spectator Friendly, requires QR Code Check-In)**

ORANGE – Port Adelaide Lighthouse Precinct (Spectator Friendly)

YELLOW – Birkenhead Tavern (Spectator Friendly)

GREEN – Birkenhead Bridge